



Pivotal Head-To-Head ENDEAVOR Study Results Published in The Lancet Oncology Demonstrate Superiority of Kyprolis® (carfilzomib) Combination Over Velcade® (bortezomib) Combination

December 5, 2015

Kyprolis Plus Dexamethasone Doubled Progression-Free Survival to More Than 18 Months Versus Velcade Plus Dexamethasone in Patients With Relapsed Multiple Myeloma First Head-to-Head Study Comparing two Proteasome Inhibitors

THOUSAND OAKS, Calif., Dec. 5, 2015 /PRNewswire/ -- Amgen (NASDAQ:AMGN) today announced that [The Lancet Oncology](#) published results from the pivotal Phase 3 head-to-head ENDEAVOR study comparing Kyprolis® (carfilzomib) plus dexamethasone to Velcade® (bortezomib) plus dexamethasone in patients with relapsed multiple myeloma. The data showed that patients treated with Kyprolis plus dexamethasone achieved progression-free survival (PFS) of 18.7 months compared to 9.4 months in those receiving bortezomib plus dexamethasone (HR=0.53; 95 percent CI: 0.44,0.65 $p<0.0001$), a current standard of care in relapsed multiple myeloma.

These findings demonstrate that patients with relapsed multiple myeloma treated with Kyprolis lived twice as long without disease worsening as those treated with bortezomib. The most common adverse events (greater than 25 percent) in the Kyprolis arm were diarrhea, anemia, fatigue, dyspnea, pyrexia and insomnia. Treatment discontinuation due to adverse events and on-study deaths were comparable between the two arms.

To view the multimedia assets associated with this press release, please click: <http://www.multivu.com/players/English/7414059-kyprolis-endeavor-lancet-oncology/>

"In this head-to-head comparison, carfilzomib plus dexamethasone resulted in a twofold decrease in the risk of progression or death, compared with bortezomib plus dexamethasone, a result that was consistent regardless of age or prior bortezomib exposure," said study co-author and investigator, Meletios A. Dimopoulos, M.D., professor of Clinical Therapeutics at the National and Kapodistrian University of Athens, School of Medicine. "For patients with multiple myeloma, these results are clinically meaningful and translate to more than nine months without disease progression."

"Coupled with results previously seen in the ASPIRE pivotal trial, data from the ENDEAVOR study support the use of Kyprolis as a backbone therapy for the management of relapsed multiple myeloma, a difficult-to-treat blood cancer," said Sean E. Harper, M.D., executive vice president of Research and Development at Amgen. "This is an important publication because it provides clinical evidence of Kyprolis' potential to extend the time patients live without their disease progressing and improve the depth and duration of a response."

Multiple myeloma is an incurable blood cancer, characterized by a recurring pattern of remission and relapse, and while new therapies have become available, a significant unmet need still remains for patients no longer responding to treatment.^{1,2} Multiple myeloma is an orphan disease and accounts for approximately one percent of all cancers.^{3,4}

Regulatory Status

Data from the ENDEAVOR study are the basis of the supplemental New Drug Application (sNDA) of Kyprolis in combination with dexamethasone for patients with relapsed multiple myeloma. The sNDA was accepted Sept. 19, 2015, for priority review by the U.S. Food and Drug Administration (FDA) and the Prescription Drug User Fee Act (PDUFA) target action date is Jan. 22, 2016. Priority review is assigned to applications for drugs that treat serious conditions and would, if approved, provide significant improvements in the safety or effectiveness of the treatment, diagnosis or prevention of serious conditions. Amgen also just announced submission of the ENDEAVOR data to the European Commission for potential authorization of Kyprolis in combination with dexamethasone in the European Union.

About ENDEAVOR

The randomized ENDEAVOR (RandomizEd, Open Label, Phase 3 Study of Carfilzomib Plus DEXamethAsone Vs Bortezomib Plus DexamethasOne in Patients With Relapsed Multiple Myeloma) trial of 929 patients evaluated Kyprolis in combination with low-dose dexamethasone, versus bortezomib with low-dose dexamethasone in patients whose multiple myeloma has relapsed after at least one, but not more than three prior therapeutic regimens. The primary endpoint of the trial was PFS, defined as the time from treatment initiation to disease progression or death. In a clinical trial, measuring the PFS is one way to demonstrate how well a treatment works.⁵

The superiority of the Kyprolis combination compared to the bortezomib combination with respect to PFS was seen across all pre-specified subgroups, including Velcade-naïve patients, those with high- or standard-risk cytogenetics and with or without prior transplantation. The Kyprolis combination also demonstrated superiority over the bortezomib combination for secondary endpoints, achieving a higher overall response rate (76.9 percent vs. 62.6 percent; $p<0.0001$) and lower rate of grade 2 or higher neuropathy events (6 percent vs. 32 percent; $p<0.0001$). Treatment with the Kyprolis combination resulted in a two-fold increase in the median duration of response (21.3 months) compared to the bortezomib combination (10.4 months).

In the Kyprolis and bortezomib groups, 54.3 percent and 28.6 percent of patients achieved a very good partial response or better ($p<0.0001$), and 12.5 percent and 6.2 percent of patients achieved a complete response or better ($p<0.0001$), respectively. Overall survival data are not yet mature and continue to be monitored.

Treatment discontinuation due to adverse events and on-study deaths were comparable between the two arms. A number of known adverse drug reactions were reported at a higher rate in the Kyprolis group compared with the bortezomib group, including any-grade dyspnea, hypertension, pyrexia, and cough (preferred terms) as were any-grade cardiac failure (grouped term; 8.2 percent vs. 2.9 percent) and acute renal failure (grouped term; 8.2 percent vs. 4.8 percent). However, the rates of cardiac and renal failure for Kyprolis were comparable to those observed in the previous Phase 3 ASPIRE study.

Rates of grade 3 or higher adverse events were 73.2 percent in the Kyprolis group and 66.9 percent in the bortezomib group. Grade 3 or higher adverse events of interest in the Kyprolis and bortezomib groups included hypertension (preferred term; 8.9 percent vs. 2.6 percent), dyspnea (preferred term; 5.4 percent vs. 2.2 percent), cardiac failure (grouped term; 4.7 percent vs. 1.8 percent), acute renal failure (grouped term; 4.0 percent

vs. 2.6 percent), ischemic heart disease (grouped term; 1.7 percent vs. 1.6 percent) and pulmonary hypertension (grouped term; 0.6 percent vs. 0.2 percent).

Patients received treatment until progression with Kyprolis as a 30-minute infusion on days 1, 2, 8, 9, 15 and 16 of 28 day treatment cycles, along with low-dose dexamethasone (20 mg). For Cycle 1 only, Kyprolis was administered at 20 mg/m² on days 1 and 2, followed by escalation to 56 mg/m² from day 8. Patients who tolerated 56 mg/m² in Cycle 1 were kept at this dose for subsequent cycles. Patients who received bortezomib (1.3 mg/m²) with low-dose dexamethasone (20 mg) were administered bortezomib subcutaneously or intravenously at the discretion of the investigator and in accordance with regulatory approval of bortezomib. More than 75 percent of the patients in the control arm received bortezomib subcutaneously. This study was conducted at 235 sites worldwide. For information about this trial, please visit www.clinicaltrials.gov under trial identification number NCT01568866.

Amgen Webcast Investor Meeting

Amgen will host a webcast investor meeting at the 57th Annual American Society of Hematology (ASH) Meeting on Monday, Dec. 7, 2015, at 7 p.m. ET. Sean E. Harper, M.D., executive vice president of Research and Development at Amgen, along with members of Amgen's clinical development team and clinical investigators will participate to discuss data presented at ASH and Amgen's broader oncology portfolio of products.

Live audio of the conference call will be simultaneously broadcast over the Internet and will be available to members of the news media, investors and the general public.

The webcast, as with other selected presentations regarding developments in Amgen's business given by management at certain investor and medical conferences, can be found on Amgen's website, www.amgen.com, under *Investors*. Information regarding presentation times, webcast availability and webcast links are noted on Amgen's Investor Relations Events Calendar. The webcast will be archived and available for replay for at least 90 days after the event.

About Kyprolis[®] (carfilzomib) for Injection

Kyprolis is an irreversible proteasome inhibitor for use in the treatment of patients with relapsed multiple myeloma.² Proteasomes play an important role in cell function and growth by breaking down proteins that are damaged or no longer needed.⁶ Kyprolis has been shown to block proteasomes, leading to an excessive build-up of proteins within cells.⁷ In some cells, Kyprolis can cause cell death, especially in myeloma cells because they are more likely to contain a higher amount of abnormal proteins.⁷ The irreversibility of Kyprolis' binding has also been shown to offer a more sustained inhibition of the targeted enzymes.⁸

Kyprolis is currently approved in the U.S. in combination with lenalidomide and dexamethasone for the treatment of patients with multiple myeloma who have received one to three prior lines of therapy.

Kyprolis is also indicated under FDA accelerated approval as a single agent for the treatment of patients with multiple myeloma who have received at least two prior therapies including bortezomib and an immunomodulatory agent and have demonstrated disease progression on or within 60 days of completion of the last therapy. Approval is based on response rate. Clinical benefit, such as improvement in survival or symptoms, has not been verified.

Kyprolis is also approved in Argentina, Israel, Kuwait, Mexico, Thailand, Colombia and the European Union. Additional regulatory applications for Kyprolis are underway and have been submitted to health authorities worldwide.

Kyprolis is a product of Onyx Pharmaceuticals, Inc. Onyx Pharmaceuticals is a subsidiary of Amgen and holds development and commercialization rights to Kyprolis globally, excluding Japan.

For more information about Kyprolis, visit www.kyprolis.com.

Important Safety Information Regarding Kyprolis (carfilzomib) for Injection U.S. Indication

Cardiac Toxicities

New onset or worsening of pre-existing cardiac failure (e.g., congestive heart failure, pulmonary edema, and decreased ejection fraction), restrictive cardiomyopathy, myocardial ischemia, and myocardial infarction including fatalities have occurred following administration of Kyprolis. Death due to cardiac arrest has occurred within a day of Kyprolis administration.

Withhold Kyprolis for Grade 3 or 4 cardiac adverse events until recovery, and consider whether to restart Kyprolis based on a benefit/risk assessment.

Adequate hydration is required prior to each dose in Cycle 1. Monitor all patients for evidence of volume overload, especially patients at risk for cardiac failure. Adjust total fluid intake as clinically appropriate in patients with baseline cardiac failure or who are at risk for cardiac failure. Patients ≥ 75 years, the risk of cardiac failure is increased. Patients with New York Heart Association Class III and IV heart failure, recent myocardial infarction, and conduction abnormalities may be at greater risk for cardiac complications.

Acute Renal Failure

Cases of acute renal failure and renal insufficiency adverse events (renal impairment, acute renal failure, and renal failure) have occurred in patients receiving Kyprolis. Acute renal failure was reported more frequently in patients with advanced relapsed and refractory multiple myeloma who received Kyprolis monotherapy. This risk was greater in patients with a baseline reduced estimated creatinine clearance. Monitor renal function with regular measurement of the serum creatinine and/or estimated creatinine clearance. Reduce or withhold dose as appropriate.

Tumor Lysis Syndrome

Cases of Tumor Lysis Syndrome (TLS), including fatal outcomes, have occurred in patients receiving Kyprolis. Patients with multiple myeloma and a high tumor burden should be considered at greater risk for TLS. Adequate hydration is required prior to each dose in Cycle 1, and in subsequent cycles as needed. Consider uric acid lowering drugs in patients at risk for TLS. Monitor for evidence of TLS during treatment and manage promptly. Withhold Kyprolis until TLS is resolved.

Pulmonary Toxicity

Acute Respiratory Distress Syndrome (ARDS), acute respiratory failure, and acute diffuse infiltrative pulmonary disease such as pneumonitis and interstitial lung disease have occurred in patients receiving Kyprolis. Some events have been fatal. In the event of drug-induced pulmonary toxicity, discontinue Kyprolis.

Pulmonary Hypertension

Pulmonary arterial hypertension (PAH) was reported in patients treated with Kyprolis. Evaluate with cardiac imaging and/or other tests as indicated. Withhold Kyprolis for PAH until resolved or returned to baseline and consider whether to restart Kyprolis based on a benefit/risk assessment.

Dyspnea

Dyspnea was reported in patients treated with Kyprolis. Evaluate dyspnea to exclude cardiopulmonary conditions including cardiac failure and pulmonary syndromes. Stop Kyprolis for Grade 3 or 4 dyspnea until resolved or returned to baseline. Consider whether to restart Kyprolis based on a benefit/risk assessment.

Hypertension

Hypertension, including hypertensive crisis and hypertensive emergency, has been observed with Kyprolis. Some of these events have been fatal. Monitor blood pressure regularly in all patients. If hypertension cannot be adequately controlled, withhold Kyprolis and evaluate. Consider whether to restart Kyprolis based on a benefit/risk assessment.

Venous Thrombosis

Venous thromboembolic events (including deep venous thrombosis and pulmonary embolism) have been observed with Kyprolis. Thromboprophylaxis is recommended and should be based on an assessment of the patient's underlying risks, treatment regimen, and clinical status.

Infusion Reactions

Infusion reactions, including life-threatening reactions, have occurred in patients receiving Kyprolis. Symptoms include fever, chills, arthralgia, myalgia, facial flushing, facial edema, vomiting, weakness, shortness of breath, hypotension, syncope, chest tightness, or angina. These reactions can occur immediately following or up to 24 hours after administration of Kyprolis. Premedicate with dexamethasone to reduce the incidence and severity of infusion reactions. Inform patients of the risk and of symptoms of an infusion reaction and to contact a physician immediately if they occur.

Thrombocytopenia

Kyprolis causes thrombocytopenia with recovery to baseline platelet count usually by the start of the next cycle. Thrombocytopenia was reported in patients receiving Kyprolis. Monitor platelet counts frequently during treatment with Kyprolis. Reduce or withhold dose as appropriate.

Hepatic Toxicity and Hepatic Failure

Cases of hepatic failure, including fatal cases, have been reported during treatment with Kyprolis. Kyprolis can cause increased serum transaminases. Monitor liver enzymes regularly. Reduce or withhold dose as appropriate.

Thrombotic Thrombocytopenic Purpura /Hemolytic Uremic Syndrome (TTP/HUS)

Cases of TTP/HUS including fatal outcome have occurred in patients receiving Kyprolis. Monitor for signs and symptoms of TTP/HUS. Discontinue Kyprolis if diagnosis is suspected. If the diagnosis of TTP/HUS is excluded, Kyprolis may be restarted. The safety of reinitiating Kyprolis therapy in patients previously experiencing TTP/HUS is not known.

Posterior Reversible Encephalopathy Syndrome (PRES)

Cases of PRES have occurred in patients receiving Kyprolis. PRES was formerly known as Reversible Posterior Leukoencephalopathy Syndrome. Consider a neuro-radiological imaging (MRI) for onset of visual or neurological symptoms, such as seizure, headache, lethargy, confusion, blindness, altered consciousness, along with hypertension. Discontinue Kyprolis if PRES is suspected and evaluate. The safety of reinitiating Kyprolis therapy in patients previously experiencing PRES is not known.

Embryo-fetal Toxicity

Kyprolis can cause fetal harm when administered to a pregnant woman based on its mechanism of action and findings in animals.

Females of reproductive potential should be advised to avoid becoming pregnant while being treated with Kyprolis and the potential hazard to the fetus if Kyprolis is used during pregnancy.

ADVERSE REACTIONS

The most common adverse events of any grade occurring in at least 20 percent of patients treated with Kyprolis in monotherapy trials: anemia, fatigue, thrombocytopenia, nausea, pyrexia, decreased platelets, dyspnea, diarrhea, decreased lymphocyte, headache, decreased hemoglobin, cough, edema peripheral.

The most common adverse events of any grade occurring in at least 20 percent of patients treated with Kyprolis in the combination therapy trial: decreased lymphocytes, decreased absolute neutrophil count, decreased phosphorus, anemia, neutropenia, decreased total white blood cell count, decreased platelets, diarrhea, fatigue, thrombocytopenia, pyrexia, muscle spasm, cough, upper respiratory tract infection, decreased hemoglobin, hypokalemia.

Full U.S. prescribing information is available at www.kyprolis.com.

Important EU Product Safety Information

This medicinal product is subject to additional monitoring. This will allow quick identification of new safety information. Healthcare professionals are asked to report any suspected adverse reactions.

Kyprolis treatment should be supervised by a physician experienced in the use of anti-cancer therapy. The most serious side effects that may occur during Kyprolis treatment include: cardiac toxicity, pulmonary toxicities, pulmonary hypertension, dyspnoea, hypertension including hypertensive crises, acute renal failure, tumour lysis syndrome, infusion reactions, thrombocytopenia, hepatic toxicity, posterior reversible encephalopathy syndrome (PRES) and thrombotic thrombocytopenic purpura/haemolytic uremic syndrome (TTP/HUS). The most common side effects are anaemia, fatigue, diarrhoea, thrombocytopenia, nausea, pyrexia, dyspnoea, respiratory tract infection, cough and peripheral oedema.

Please refer to the Summary of Product Characteristics for full European prescribing information.

About Amgen's Commitment to Oncology

Amgen Oncology is committed to helping patients take on some of the toughest cancers, such as those that have been resistant to drugs, those that progress rapidly through the body and those where limited treatment options exist. Amgen's supportive care treatments help patients combat certain side effects of strong chemotherapy, and our targeted medicines and immunotherapies focus on more than a dozen different malignancies, ranging from blood cancers to solid tumors. With decades of experience providing therapies for cancer patients, Amgen continues to grow its portfolio of innovative and biosimilar oncology medicines.

About Amgen

Amgen is committed to unlocking the potential of biology for patients suffering from serious illnesses by discovering, developing, manufacturing and delivering innovative human therapeutics. This approach begins by using tools like advanced human genetics to unravel the complexities of disease and understand the fundamentals of human biology.

Amgen focuses on areas of high unmet medical need and leverages its biologics manufacturing expertise to strive for solutions that improve health outcomes and dramatically improve people's lives. A biotechnology pioneer since 1980, Amgen has grown to be one of the world's leading independent biotechnology companies, has reached millions of patients around the world and is developing a pipeline of medicines with breakaway potential.

For more information, visit www.amgen.com and follow us on www.twitter.com/amgen.

Forward-Looking Statements

This news release contains forward-looking statements that are based on the current expectations and beliefs of Amgen Inc. and its subsidiaries (Amgen or us) and are subject to a number of risks, uncertainties and assumptions that could cause actual results to differ materially from those described. All statements, other than statements of historical fact, are statements that could be deemed forward-looking statements, including estimates of revenues, operating margins, capital expenditures, cash, other financial metrics, expected legal, arbitration, political, regulatory or clinical results or practices, customer and prescriber patterns or practices, reimbursement activities and outcomes and other such estimates and results. Forward-looking statements involve significant risks and uncertainties, including those discussed below and more fully described in the Securities and Exchange Commission (SEC) reports filed by Amgen Inc., including Amgen Inc.'s most recent annual report on Form 10-K and any subsequent periodic reports on Form 10-Q and Form 8-K. Please refer to Amgen Inc.'s most recent Forms 10-K, 10-Q and 8-K for additional information on the uncertainties and risk factors related to our business. Unless otherwise noted, Amgen is providing this information as of Dec. 5, 2015, and expressly disclaims any duty to update information contained in this news release.

No forward-looking statement can be guaranteed and actual results may differ materially from those we project. Discovery or identification of new product candidates or development of new indications for existing products cannot be guaranteed and movement from concept to product is uncertain; consequently, there can be no guarantee that any particular product candidate or development of a new indication for an existing product will be successful and become a commercial product. Further, preclinical results do not guarantee safe and effective performance of product candidates in humans. The complexity of the human body cannot be perfectly, or sometimes, even adequately modeled by computer or cell culture systems or animal models. The length of time that it takes for us and our partners to complete clinical trials and obtain regulatory approval for product marketing has in the past varied and we expect similar variability in the future. We develop product candidates internally and through licensing collaborations, partnerships and joint ventures. Product candidates that are derived from relationships may be subject to disputes between the parties or may prove to be not as effective or as safe as we may have believed at the time of entering into such relationship. Also, we or others could identify safety, side effects or manufacturing problems with our products after they are on the market. Our business may be impacted by government investigations, litigation and product liability claims. If we fail to meet the compliance obligations in the corporate integrity agreement between us and the U.S. government, we could become subject to significant sanctions. We depend on third parties for a significant portion of our manufacturing capacity for the supply of certain of our current and future products and limits on supply may constrain sales of certain of our current products and product candidate development.

In addition, sales of our products (including products of our wholly-owned subsidiaries) are affected by the reimbursement policies imposed by third-party payers, including governments, private insurance plans and managed care providers and may be affected by regulatory, clinical and guideline developments and domestic and international trends toward managed care and healthcare cost containment as well as U.S. legislation affecting pharmaceutical pricing and reimbursement. Government and others' regulations and reimbursement policies may affect the development, usage and pricing of our products. In addition, we compete with other companies with respect to some of our marketed products as well as for the discovery and development of new products. We believe that some of our newer products, product candidates or new indications for existing products, may face competition when and as they are approved and marketed. Our products may compete against products that have lower prices, established reimbursement, superior performance, are easier to administer, or that are otherwise competitive with our products. In addition, while Amgen and its partners routinely obtain patents for their products and technology, the protection of our products offered by patents and patent applications may be challenged, invalidated or circumvented by our or our partners' competitors and there can be no guarantee of our or our partners' ability to obtain or maintain patent protection for our products or product candidates. We cannot guarantee that we will be able to produce commercially successful products or maintain the commercial success of our existing products. Our stock price may be affected by actual or perceived market opportunity, competitive position, and success or failure of our products or product candidates. Further, the discovery of significant problems with a product similar to one of our products that implicate an entire class of products could have a material adverse effect on sales of the affected products and on our business and results of operations. Our efforts to integrate the operations of companies we have acquired may not be successful. We may experience difficulties, delays or unexpected costs and not achieve anticipated benefits and savings from our ongoing restructuring plan. Our business performance could affect or limit the ability of our Board of Directors to declare a dividend or their ability to pay a dividend or repurchase our common stock. The scientific information discussed in this news release relating to new indications for Amgen's products is preliminary and investigative and is not part of the labeling approved by the U.S. Food and Drug Administration or the European Medicines Agency for the products. The products are not approved for the investigational use(s) discussed in this news release and no conclusions can or should be drawn regarding the safety or effectiveness of the products for these uses.

CONTACT:

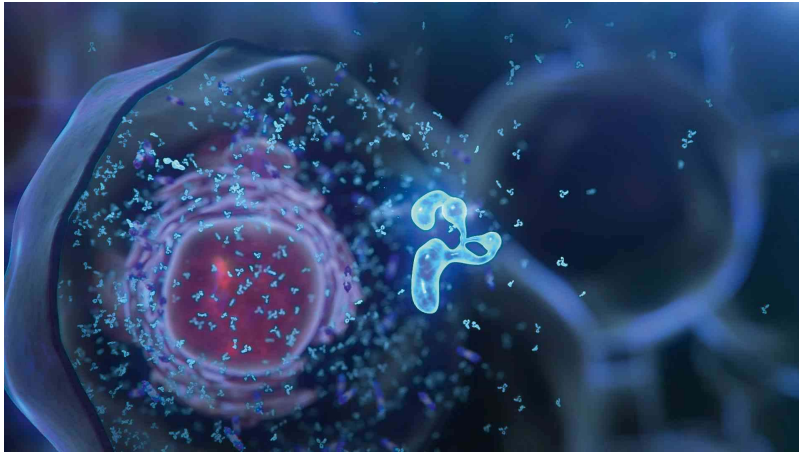
Amgen, Thousand Oaks
Kristen Davis, 805-447-3008 (media)
Kristen Neese, 805-313-8267 (media)

Arvind Sood, 805-447-1060 (Investors)

References:

1. Jakubowiak A. Management Strategies for Relapsed/Refractory Multiple Myeloma: Current Clinical Perspectives. Seminars in Hematology. 2012; 49(3)(1),S16-S32.
2. Stewart KA, Rajkumar VS, Dimopoulos MA, et al. Carfilzomib, Lenalidomide, and Dexamethasone for Relapsed Multiple Myeloma. N Engl J Med. 2015; 372:142-152.
3. GLOBCAN 2012, Global Prevalence and Incidence, available at http://globocan.iarc.fr/old/summary_table_pop_prev.asp?selection=224900&title=World&sex=0&window=1&sort=0&submit=%C2%A0Execute%C2%A0. Accessed on October 22, 2015.
4. Palumbo A and Anderson K, Multiple myeloma, N Engl J Med, 2011;364:1046–60.
5. FDA.gov. Guidance for industry: clinical trial endpoints for the approval of cancer drugs and biologics. <http://www.fda.gov/downloads/Drugs/Guidances/ucm071590.pdf>. Accessed on November 20, 2015.
6. Moreau P, Richardson PG, Cavo M, et al. Proteasome Inhibitors in Multiple Myeloma: 10 Years Later. Blood. 2012; 120(5):947-959.
7. Kyprolis® [package insert]. Thousand Oaks, CA: Amgen; 2015.
8. Kortuem KM and Stewart AK. Carfilzomib. Blood. 2012; 121(6):893-897.





AMGEN[®]

To view the original version on PR Newswire, visit: <http://www.prnewswire.com/news-releases/pivotal-head-to-head-endeavor-study-results-published-in-the-lancet-oncology-demonstrate-superiority-of-kyprolis-carfilzomib-combination-over-velcade-bortezomib-combination-300188505.html>

SOURCE Amgen